



Bloomer

Wisconsin
2025-2026



"A Place To Call Home"





Small Town Americana

Bloomer offers the best of small town Americana. Our city is large enough to offer a variety of restaurants and stores, an aquatic center, hospital, medical clinics, nursing homes, public and private schools, yet small enough to have safe neighborhoods, clean air and water, and quiet summer evenings.

Bloomer is the hub of a large agricultural area, and is a gateway city serving residents and visitors to the Blue Diamond recreation area to the north. Its ready access off of Hwy 53 makes it a great place to stop and stretch your legs, and enjoy a meal or picnic with your family.

Lake Como in the center of town offers a swimming beach and fishing. There are six city parks, a walking trail, and an 18-hole golf course, as well as ATV and snowmobile trails.

Bloomer is famous for its annual speed rope jump competition, and it offers a well-attended community fair and parade in August.




Bloomer is located in Chippewa County, Wisconsin, off state Highway 53, 25 miles north of Interstate 94. Visit us in person, or tour the highlights of Bloomer on the Chamber of Commerce website: www.bloomerchamber.com.

BLOOMER
BROADBAND

SINCE 1901

**CONNECTING
PEOPLE TO
WHAT MATTERS
MOST**

Residential and business fiber internet, Wi-Fi, phone and TV. Proudly serving Bloomer and surrounding areas.

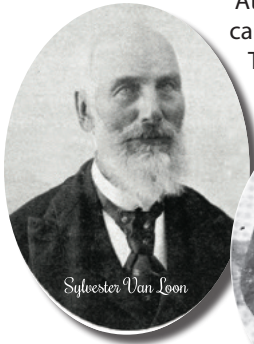
715-568-4830 | BLOOMER.NET



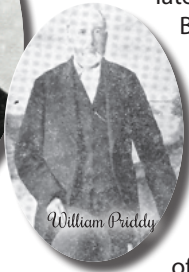


Heritage

Imagine yourself back in 1848. The United States gave birth to a new state: Wisconsin! Settlers moved west to start new lives. Logging became king of the region as the leading industry. Careful negotiations with native tribes of Ojibwa and Dakota and other Indian agents allowed for logging activity along the Red Cedar and Chippewa Rivers on the current site of the City of Bloomer under the authority of the native territorial governments.



Sylvester Van Loon



William Priddy

At this same time, a wealthy timber merchant named Bloomer came through the area scouting for a desirable location for a mill. The entire area from Bloomer to the near Lake Wissota became a milling location for logging. The Wissota dam resulted 75 years later due to industry growth. It is not known if Mr. Bloomer actually lived in the community, but the town bears his name as a reminder of his impact on the lush prairie land, also called Bloomer Prairie.

Later, in 1855, Sylvester Van Loon and William Priddy, originally from New York, came north from their homes in Sauk County, Wisconsin, to homestead. As settlers in a large sawmill town of Chippewa Falls, they selected land near Duncan Creek, and acquired most of the land which would

eventually become the City of Bloomer.

Van Loon brought his wife and children to the first log home in Bloomer. His home, built where the Main Street Café now stands, withstood a harsh Wisconsin winter. Priddy, a minister, built a two-story frame house using the upper floor of the home for church services. The house and upstairs chapel were used for over 100 years. The Priddy home also served as the City Hall for a time. Later, the home was torn down to make way for a new Post Office, which still stands today.

Van Loon became the first postmaster in Wisconsin in 1856, in a small settlement of Vanville, Wisconsin. Vanville became part of the Bloomer Prairie township after separating from the Chippewa Falls township in 1858. Years went by with Vanville platted as the Village of Vanville. Sometime between 1867 and 1877, Vanville changed its name to Bloomer. The village incorporated in 1885, and the name of Bloomer became official.

Permanent settlers began to build the community along Duncan Creek. A dam brought an active sawmill, gristmill, newspaper, banks, churches, stores, and farms to the area. Railroads soon followed as the businesses established permanent roots.

The Bloomer Historical Society maintains a museum in town. See page 21 in this book for more information on the museum. A number of historical books are available, including "A Jump Into the Past" by local author Tina Susedik, "Bloomer Centennial, History and Program," and "History of Bloomer," a reprint of the 1925 school class project.

All historical photos courtesy of Tina Susedik.





Events 2025



Annual Speed Rope Jump Contest

Saturday, Jan. 25

Bloomer is the speed rope jump capital of the world. Come and watch kids from around the state compete to see who can jump the most times in 10 seconds!

Pool Benefit - Sweetheart Dinner at the Moose Hall

Friday, Feb. 14

Take your sweetheart out to dinner and help support the Bloomer Area Aquatic & Recreation Center.

Skating and Sliding and Hockey at the City Sliding Hill/Rink

Open Winter Months (Weather Dependent)

Bring your sleds and skates (or borrow skates from the warming house) and have a great time on the sledding hill and skating rink!



Easter Egg Hunt Bloomer Elementary School

Saturday, April 19

Kids come and hunt for Easter Eggs and win prizes and candy! Also, don't forget to get your picture taken with the Easter Bunny or Chick.

Wine Walk

Spring (Date TBD)

Swirl-Smell-Sip-Walk-Repeat!

Pool Fundraiser Thrift Sale at the Fairgrounds

Begins May 16

If you love Thrift Sales you'll love the Bloomer pool fundraising thrift sale at the fairgrounds every weekend until the fair.

Appreciation Day Picnic at the Fairgrounds

Thursday, June 5

Bloomer businesses appreciate their customers. Join us for an inexpensive meal and raffle drawings.

City Wide Thrift Sales

Saturday, June 7

Lots & lots of Thrift Sale shopping all over town.

Market on Main

Summer-Fall (Thursdays 4-6pm)

Farmers Market selling local produce, meat, eggs, flowers, baked goods and more. Towne House Spirits & Eatery (Xpeditions) parking lot.



Circus

Thursday, July 10

Enjoy the live entertainment of traditional circus performances brought to you by the Culpepper

Merrweather Circus.

K9 Fundraiser—Cornhole Tournament and more

Saturday, August 2

If you enjoy cornhole, you'll enjoy this fundraiser for the Bloomer Police Department K9 Program.





Bloomer Fair

Thursday-Sunday, Aug. 7-10

The FREE Bloomer Community Fair is growing. There's a new cattle barn and meat auction this year

Crazy Days

Friday, Aug. 8

Save like CRAZY at Bloomer businesses.

Bloomer Parade

Sunday, Aug. 10

The Bloomer Fair Parade features everything you expect in a parade—bands, fire trucks, tractors, floats, old cars, politicians, candy and more!

Bloomer Ambulance Pancake Feed, Car Show, Horse Show

Saturday, Aug. 16

Start your day with great pancakes from the Bloomer Ambulance Service, then take in lots of great cars and trucks at the car show, or if horses are more your speed watch the 4H Horse Show.

Wine Walk

Fall (Date TBD)

Swirl-Smell-Sip-Walk-Repeat!

\$10,000 Visitors Center Fundraiser - Fairgrounds

Saturday, Sept. 6

Buy a ticket for a great charcoal chicken dinner and a chance to win \$10,000.

Firemen's Steak Feed at the Fairgrounds

Saturday, Sept. 13

Every year the Bloomer Fire Department puts on a great steak feed. Proceeds go to help keep the department's equipment up to date.

Woman's Club Craft Fair

Saturday, Oct. 11

Lots and Lots of great crafts and gifts all in one place at the Bloomer High School.

Halloween on Main & Children's Halloween Party

Saturday, Nov. 1

Trick or Treat on Main St. in Bloomer in the morning then show off your costume to the judges after noon at the high school. Prizes and games galore!!

Trick or Treat around Town

Friday, Oct. 31

Events 2025

Ladies Night Out Pool Fundraiser

Tuesday, Nov. 25

A fun night out for the ladies with the proceeds going to the Bloomer aquatic center.

Holiday Sales

Friday, Nov. 28, all day

Shop local and spare yourself all the big city hassles of Black Friday.

Park Lighting Ceremony

Friday, Nov. 28, 6 p.m.

Join us as our honored guest flips the switch and Lights Up The Park for the first time this Holiday season! As a bonus you can get your picture taken with Santa!

Light Up The Park

Nightly, Nov. 28 to Jan. 2

Enjoy the lights at the North Park all season long.

Breakfast with Santa at Main Street Cafe

Saturday, Dec. 13

Have breakfast and share your Christmas list with Santa. What could be a better way to start your day?

Home Lighting Contest

Saturday, Dec. 6

Drive around town, look at all the lights and displays, and vote for your favorites!

"Spread the Spirit" Events all Day

Saturday, Dec. 13

Christmas Parade on Main Street

Saturday, Dec. 13 @ 6:00 p.m.

The theme for this year's parade is "Christmas Elf's." Come on out and enjoy all the lighted parade units!





Events 2026

Annual Speed Rope Jump Contest
Saturday, Jan. 31

Pool Benefit - Sweetheart Dinner at the Moose Hall
Saturday, Feb. 14

Skating, Hockey, & Sliding
Winter Months-Weather Permitting



Appreciation Day Picnic at the Fairgrounds
Thursday, June 4

City Wide Thrift Sales
Saturday, June 6

Market on Main-Towne House Spirits & Eatery Parking Lot (Xpeditions Coffee)
Summer-Fall (Thursdays 4-6 pm)



K9 Fundraiser—Cornhole Tournament
Saturday, August 1

Easter Egg Hunt - Bloomer Elementary School
Saturday, April 4



Bloomer Fair
Thursday-Sunday, Aug. 6-9

Crazy Days
Friday, Aug. 7

Wine Walk
Spring (Date TBD)

Pool Fundraiser Thrift Sale at the Fairgrounds
Begins May 14

*These dates and events may be subject to change.
Please check our website at bloomerchamber.com; Facebook page or by calling 715-568-3339.*



SCAN ME

To go to the Bloomer Chamber of Commerce event page.





Bloomer Parade

Sunday, Aug. 9

Bloomer Ambulance Pancake Feed, Car Show, Horse Show

Saturday, Aug. 15



Wine Walk

Fall (Date TBD)

\$10,000 Visitors Center Fundraiser - Fairgrounds

Saturday, Sept. 12

Firemen's Steak Feed at the Fairgrounds

Saturday, Sept. 19

Woman's Club Craft Fair

Saturday, Oct. 10

Halloween on Main & Children's Halloween Party

Saturday, Oct. 31



Events 2026

Trick or Treat around Town

Saturday, Oct. 31

Ladies Night Out Pool Fundraiser

Tuesday, Nov. 24

Holiday Sales

Friday, Nov. 27

Park Lighting Ceremony

Friday, Nov. 27, 6 p.m.



Light Up The Park

Nightly, Nov. 27 to Jan. 2

Breakfast with Santa at Main Street Cafe

Saturday, Dec. 12

"Spread the Spirit" Events all Day

Saturday, Dec. 12

Christmas Parade on Main Street

Saturday, Dec. 12 @ 6:00 p.m.

Saving you money. - Serving you best.



Bloomer Hardware LLC

- Screen & Window Repair
- Sewing Machine Repair
- Rug Doctor Rental
- Hunting/Fishing Licenses
- Appliance Dolly Rental
- Plexi Glass Cutting
- Glass Cutting
- Key Cutting
- UPS Drop Off Location
- Live Bait
- Paint
- Bird Seed

STORE HOURS: MON. - SAT. 6:30 AM-8 PM; SUN., 7 AM-8 PM

1813 17th Ave. • (715) 568-4821 Shop online at bloomerhardware.com



Food

Birch Point Resort

14503 210th Ave
715-568-1525
birchpointresort.net/home
Lunch & Dinner



Bloomer Dairy Queen

1317 17th Ave
715-568-1320
dairyqueen.com
Lunch & Dinner

Bloomer House

1019 15th Ave
715-568-5324
Lunch & Dinner



Bloomer Memorial Golf Course

118 E. 13th Ave
715-568-1743
bloomergolfcourse.com
Lunch & Dinner

Bloomer Moose

1890 9th Ave
715-568-1300
facebook.com/pages/
Moose-Lodge
Friday Fish Fry

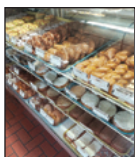


Bohemian Ovens

905 Martin Rd
715-568-3676
bohemian-ovens.com
Breakfast - Lunch - Dinner

Cavern 74

1526 Martin Rd
715-568-7038
Lunch & Dinner



Chrissy's Bloomer Bakery

1415 Main St
715-568-3321
facebook.com/bloomerbakery/
Baked Goods

Cornell Lake Resort

16918 190th Ave
(715) 288-6015
www.facebook.com/Cornell-
Lake-Resort-and-Campground
-112813972073141/
Lunch & Dinner



Crush Nutrition

1406 Main St
715-933-8693
crushnutritionbloomer.com
Teas & Shakes

Custer's Cones & Candy

1416 Main Street
715-568-3080
*Ice Cream, Candy, Homeade Fudge,
& Popcorn*



Farm House & Gifts

1205 15th Ave
715-568-1240
facebook.com/
farmhousebloomerwi/
Lunch
Breakfast & Lunch

Happy Hour Bar & Grill

1318 Main St
715-568-1622
happyhourclub.com
Lunch & Dinner



Hardee's of Bloomer

2070 19th Ave
715-568-2450
facebook.com/HardeesBloomerWI/
Breakfast - Lunch - Dinner

Harms Way Bar & Grill

1103 15th Ave
715-568-3999
facebook.com/people/
Harms-Way-Bar-
Grill/100063796052868/
Lunch & Dinner



Food



Kwik Trip

1625 Woodard Rd
715-568-1550
facebook.com/KWIKTRIP427/
Breakfast - Lunch - Dinner

Main Street Cafe

1418 Main St
715-568-2233
www.mainstreetcafe.com
Breakfast - Lunch - Dinner



McDonalds

2055 19th Ave
715-568-1777
www.mccourtesy.com
Breakfast - Lunch - Dinner

Pines Ballroom

9832 Cty Hwy SS
715-568-2432
facebook.com/profile.php?id=100047494675966
Parties & Events

River Country Co-op



1300 Main St
715-568-2343
rivercountrycoop.com
Breakfast - Lunch - Dinner

Rock Lake Lodge & Campground

23015 153rd St
715-568-4370
rocklakecampground.com
Lunch & Dinner



Shadicks Price Rite Foods

1303 Main St
715-568-4430
shadicks.com
Deli & Lunch - Dinner

Tasty Trolley of Bloomer Food Truck

Locations Vary
715-829-9732
tastytrolleyofbloomer@gmail.com
Lunch - Dinner Traveling Food Truck



Towne House Coffee & Market

Towne House Spirits & Eatery

1319 Main St (spirits & eatery
downstairs-coffee & eatery upstairs)

715-568-5420
facebook.com/
xposbarcoffee/
xpeditionspub.com
Breakfast - Lunch - Dinner



Valley Tavern

14515 WI-40
(715) 568-3060
www.facebook.com/people/Valley-
Tavern/100063478959621/
Lunch & Dinner

White Pine Pavilion

9832 Cty Hwy SS
715-568-1800
Parties & Events-Catering



Visit us at the
Bloomer Chamber office
at 1731 17th Avenue.

Check out our website at
www.bloomerchamer.com

Follow us facebook

HARMS
Way
BAR & GRILL

DAILY LUNCH
& DINNER SPECIALS
HOMEMADE PIZZA

Open Mon. - Sat.
11:00 a.m. - Close;
Closed Sunday



1103 15th Ave., Bloomer, WI
715-568-3999

Shopping



A Secret Garden
1416 Main St
715-568-1037
www.asecretgarden.com
bloomer.com/
Floral & Gifts

Bloomer Floral & Gift Shop

1316 Main St
715-568-5600
bloomerfloralandboutique.com
www.bloomer-floral.com

*Floral - Clothing - Gifts -
Home Décor & More!*



Bloomer Hardware

1406 Main St
715-568-4821
bloomerhardware.com
Hardware - Screen/Window Repair



Bloomer Screen Printing

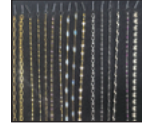
810 17th Ave
715-568-2461
www.facebook.com/bloomer-screen-printing-embroidery
Clothing-Bloomer wear

Ed's Health Mart Pharmacy

1511 Main St
715-568-2190
https://hometownpharmacyrx.com/Locations/
Bloomer
Pharmacy - Office Supplies - Greeting Cards

Faboo

1513 Main St
715-289-2381
faboo.glossgenius.com



Farm House & Gifts

1205 15th Ave
715-568-1240
facebook.com/farmhousebloomerwi/
Knick Knacks - Puzzles - Clothing & Accessories

Shadick's Sporting Goods & Hardware

1502 16th Ave
715-568-4475
https://www.acehardware.com/store-details/17782
Sporting Goods - Guns - Hardware - Stihl Dealer

Twice Blessed

1404 Main St
www.facebook.com/twiceblessedbloomer
Trift Store - Reselling Donated Goods

★★★★★

Eat, Drink, Shop LOCAL

Discover & Support Great Local Boutiques, Markets, Bars, Restaurants, Breweries & Coffee Shops!

Your Hometown Pharmacy . . .



*We're Your
Prescription
Headquarters!*

KEEPING A PULSE ON YOUR GOOD HEALTH

ED'S PHARMACY

- Full Service Pharmacy
- Office Supplies
- Giftware
- Greeting Cards
- Women's Accessories
- designergreetings

Mon-Fri. 9am-5:30pm Sat. 9am-Noon Sun. Closed

On Main Street in Downtown Bloomer 715-568-2190



GROWING TOGETHER

– Since 1907 –



• • • **BLOOMER OFFICE** • • •
1923 17th Ave., PO Box 286, Bloomer, WI 54724
715-568-3400



SECURITY BANK

www.securityonlinebank.com



NEW AUBURN
715-237-2658

SAND CREEK
715-658-1415

RIDGELAND
715-949-2265





Meeting Places

Bloomer Aquatic Center

1731 17th Ave
715-568-3339
facebook.com/BloomerAreaAquaticCenter/

Bloomer Golf Course

118 13th Ave
715-568-1743
bloomergolfcourse.com

Bloomer Moose

1890 9th Ave
715-568-1300
facebook.com/pages/Moose-Lodge/247187158664378

Bloomer Senior Citizens Center

2121 Duncan Road
Bloomer, WI 54724
(715) 568-1888

GE Bleskacek Family Memorial Library

1519 17th Ave
715-568-2384
bloomerpubliclibrary.org

Main Street Cafe

1418 Main St
715-568-2233
www.mainstreetcafe.com

Pines Ballroom

9832 Cty Hwy SS
715-568-2432
facebook.com/profile.php?id=100047494675966

Security Financial Bank

1401 Main St
715-568-1100
www.sfbank.com

SS Interiors

Serving: Bloomer, New Auburn, Chippewa Falls,
Eau Claire, Chetek, Rice Lake, Altoona,
60 Mile Radius

*All flooring, back splashes,
and tile showers!*

OUR SPECIALTIES:

Flooring, Carpet, Vinyl Plank and Tiles, Wood,
Tile for floors, backsplashes, and showers.

SERVICES AVAILABLE:

Flooring removal and installation of commercial
and residential backsplashes and showers.
Rug binding and backing.

715-568-2555

JOHN CARON • SUE DAVIS
ROXIE ZWIEFELHOFER

920 11th Avenue, Bloomer

Mon.-Fri. 8:00-5:00; Sat. 9:00-Noon
or by Appointment

DOGGIE DOODLES GROOMING

17114 120th Street
(off Highway SS)
Bloomer, WI

Kimber Leonard

715-568-2649

or cell

630-567-0793

(Best)



FULL
GROOMING
STARTING
AT \$40



Meeting Places

Towne House Coffee & Market

1319 Main St
715-568-5420
facebook.com/xposbarcoffee/
xpeditionspub.com

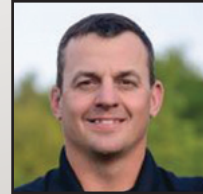
White Pine Pavilion

9832 County Hwy SS
715-568-1800 • 715-404-9399

Visit us at the
Bloomer Chamber office
at 1731 17th Avenue.

Check out our website at
www.bloomerchamer.com

RE/MAX
AFFILIATES



www.teamjenneman.com

Becky Jenneman,

Realtor ABR® SRS

715-933-0353

beckyjenneman@gmail.com

Brady Jenneman,

Realtor ABR®

715-933-0329

bradyjenneman@gmail.com

Bloomer WI 54724

LOCATED IN THE
BLOOMER AREA
AQUATIC CENTER



Midwest
PHYSICAL THERAPY
&
FITNESS CENTER

1731 17th Avenue Bloomer, WI

715.568.4669

www.midwestpt.net

Physical Therapy



Jim Price, Owner PT • Andy Olson, MPT
Marissa Seibel, DPT

Rehabilitation & Prevention of Injuries

- ✓ Post Surgical Rehab
- ✓ Sports Rehabilitation
- ✓ Workers Compensation Injuries
- ✓ Return to Work & Sports Programs
- ✓ Neck & Back Pain
- ✓ Aquatic Therapy
- ✓ Most Insurances Accepted

Employer Services Programs

- ✓ Post Offer Employment Testing
- ✓ Early Injury Intervention
- ✓ Job Demands Analysis
- ✓ Fit for Duty Testing
- ✓ Ergonomic Analysis
- ✓ Drug Screening
- ✓ OSHA Hearing Testing

Help minimize the risk of injury on the job and reduce health insurance costs.

Fitness Center



Member Access 24/7

- ✓ Cardio Equipment
- ✓ Free Weights
- ✓ Aerobics Classes
- ✓ Affordable Rates!

IMPROVE YOUR WELLNESS TODAY!

In addition to treating your injury, our team can assess any underlying conditions and help prevent further damage. Our goal is to assist you in finding relief and improving your function, as well as your overall health and well-being!



Parks



A successful community provides places for residents and visitors to meet for fun, recreation and spending time with friends and family. It also provides opportunities to learn new skills and seek new information. Bloomer's many parks and public institutions help make it a successful community.

North Park

This 10-acre multi-purpose city-owned park is located at the northwest end of the city. Duncan Creek/Lake Como forms the western boundary of the park. Facilities include a large open pavilion with electric outlets and picnic tables, three smaller picnic tables and a smaller open pavilion. All have grills nearby. A playground, ballpark with backstop, paved and fenced basketball and tennis court, a double sandlot volleyball court, and a handicap accessible fishing dock with kayak launch are available. Playground equipment, adult exercise equipment, restrooms, picnic tables and walkways are handicap accessible. A round pavilion built in 1998 has a stage on one side to provide for plays, concerts and outdoor church services. An abandoned bald eagle's nest is on display for visitors to view. In the winter, holiday decorations are put up through a city/business partnership and turned on for a beautiful holiday drive.

Willis Park

This half-acre park is the heart of the city along Duncan Creek and has picnic tables and playground equipment. Often referred to as "the duck park", visitors can often see and feed ducks swimming on the creek.

Witt Park

This 4-acre park further south along Duncan creek has a picnic area, new pavilion, and nature walk, along with a new playground area.

Armor Park This small park is tucked behind the dam. This secluded spot offers picnic tables, a place to relax or do some fishing.

Freeway Drive Park/Playground

This one-quarter acre neighborhood playground is west of the hospital on Freeway Drive. It has two sheltered picnic tables, swings, a climber, a buck-about, two diggers, two bouncers, a slide and a sandbox.

Westbrook Park

This 1.5 acre park is located in the southwest part of the city in the Westbrook subdivision. Sheltered picnic tables, swings, critter climber, buck-a-bout and a ring trapeze are available.

Community Walking Park & Outdoor Learning

This new project started by the Bloomer Woman's Club and supported by various civic and private groups as well as the schools, consists of a butterfly garden with flower beds, benches and picnic tables. The 1,050 foot rainwater drainage ditch has three small bridges. The water empties into Eaglet Creek, and then Duncan Creek. A 30-foot bridge crosses Eaglet Creek to access a 6-acre prairie. Over 1,500 feet of walking trails lead to two learning stations, one in the prairie and one near Duncan Creek.





Bloomer Aquatic Center



We Offer

- Daily swimming
- Swim lessons for all ages year round
- Private lessons
- Aquatic classes
- Therapy for people with almost every type of medical condition
- Swim team for youth
- After school swim
- Red Cross Training
- Life Guard instructions/Red Cross
- After school program
- Meeting rooms
- No one turned away policy
- CPR training/Red Cross
- Parties/group gatherings
- Office staff for nonprofits
- Health classes
- "Swim With Tim" funding

Welcome to the Bloomer Area Aquatic and Recreation Center and the Pecha Family Memorial Pool!

Located at 1731 17th Avenue, Bloomer

Aquatic Center features:

Six lanes, wading pool for small children, handicap accessible, pool toys and flotation items.

Rates:

Day passes \$5.00 per person, \$15.00 family, good for one day. For complete membership information check out www.bloomerpool.com. Senior Swim, M-F 10:30 a.m. – 12 Noon, \$3.

Offering:

Swimming lessons, private swimming lessons, lifeguard classes, viewing room, party and group packages and rates, lap lanes.

Building features:

Honor shop coffee and snack area, large meeting room, private family rooms, locker rooms, sitting area, visitors center area.

Private Events:

Schedule private events for clubs, families, churches, schools, or any other organizations - call for rates.

All Ages Welcome:

Ages 9 and up are able to swim alone, 0-9 years must have a parent or legal guardian present.





Library



The G.E. Bleskacek Family Memorial Bloomer Public Library is located at 1519 17th Avenue. The library's mission is to provide resources and services that inspire people to explore, learn and connect. During the past year more than 3,000 people (of all ages) participated in the 70+ free programs and activities offered by the library. The library offers story time sessions for young children, weekly afterschool programs for students, along with a variety of other programs and activities for teens and adults. The Bloomer Library has a collection of over 20,000 Books, DVDs, Audiobooks, Magazines, and Music CDs. As a member of IFLS Library System, the library provides access to over 150,000 eBooks and eAudiobooks and over 1.4 million items from more than 50 public libraries in our system area.

A world of resources is available to the community, including: downloadable media like e-books, e-magazines, e-audiobooks; online learning and research resources; as well as borrowing materials from outside the library system including colleges and universities across the country.

The library offers free Wi-Fi connectivity, access to six internet computers, five hotspots available for check-out, along with printing, copying, scanning and faxing services. In 2022, the library digitized *The Bloomer Workman* and *The Bloomer Advance* microfilm reels which are now searchable from the library's website.

Library cards are free to anyone with valid ID and proof of address. Children can get their own library

cards with parent/guardian permission. Visit the library's website at bloomerpubliclibrary.org or stop by the library to find out all the ways you can explore, learn and connect.



Stephanie Homann
 (715) 456-2022
 Steph.Homann@icloud.com
 www.Intentional-Journeys.com

HONEYMONDS & ASSOCIATES
TRAVEL & TOURS

asta
American Society of
Travel Advisors

ACTION & ADVENTURE
TRAVEL & TOURS





Historical House



*For Good.
Forever.*

**COMMUNITY
FOUNDATION**
of CHIPPEWA COUNTY

YOURLEGACYFOREVER.ORG
715.723.8125

**BUILD YOUR LEGACY
IN CHIPPEWA COUNTY**

The Bloomer Museum Bi-Centennial House, 2200 South Main St., holds countless treasures from the Bloomer area's past. Designed and built by students in a high school construction class in 1976 to celebrate our nation's 200th anniversary of the signing of the Declaration of Independence, the Bi-Centennial House is operated by the Bloomer Historical Society. The society's purpose and intent is to collect and store written histories of events, buildings, individuals and families and further provide for storage and display of artifacts of historical interest. The collection includes items from the 19th century through today. Visitors can examine amateur and professional photographs, farm tools, kitchen items, vintage clothing, antique dishes, Bloomer advertising pieces, past copies of the city's newspaper The Bloomer Advance, a complete blacksmith shop, military memorabilia, the old Chippewa County scale, and several other items. The Bi-Centennial House Museum is open by appointment only. Please call 715-568-2399 for appointments.





Shadick's
PRICE-RITE
FOODS

1303 Main Street
Bloomer

Shadick's
GSTORE

Corner of
Hwy 64 & 40
Bloomer

Shadick's
SPORTING GOODS
& **HARDWARE**

1502 16th Avenue
Bloomer

OFFERING ...

- Grocery**
- ◆◆
- Meat**
- ◆◆
- Homemade Sausage**
- ◆◆
- Produce**
- ◆◆
- Deli**
- ◆◆
- Liquor**
- ◆◆
- Beer**
- ◆◆
- Wine**

715-568-4430
OPEN 7 DAYS A WEEK
7 A.M. - 9 P.M.

◆◆◆◆

Locally Owned and
Operated Since 1985

CARRYING ...

- a wide
selection of

- Fishing Baits

- Live Baits

- Cold Beer

- Hot and Cold
Deli

- Hunting
and Fishing
Licenses

715-568-1461
OPEN 7 DAYS A WEEK
5 A.M. - 9 P.M.

Bloomer's Only
Hometown Owned
Gas Station

OFFERING ...

- Firearms
.....
- Ammo
.....
- Hunting and
Fishing Supplies
.....
- Ariens, Gravelly
and Stihl
Dealership
.....
- Small Engine
Repair

715-568-4475
OPEN 7 DAYS A WEEK
MON. - SAT. 7 A.M. - 7 P.M.
SUNDAY 8 A.M. - 4 P.M.
.....

Large Selection of
Hardware with Years of
Experience
Waiting to Serve You.





Veterans Memorial

The Bloomer Veterans Memorial is located off of Hwy 40 on the north side of town, by the Bloomer Middle School.

A Brief History of the Memorial

- **April 2004 - Initial organizational meeting of Bloomer Memorial Committee.
- **July 2004 - Memorial property donated by Tom and Sue Bleskacek.
- **October 2005 - Construction begins with ground breaking.
- **November 2005 - Flag poles installed and retaining wall built.
- **July 2006 - Cement pads for tables and benches constructed.
- **2007 - POW Monuments established and in place.
- **October 2007 - Pavers and surrounding stone floor were laid.
- **January 2008 - Black tablets listing area veterans were delivered and set into place.
- **May 2008 - Bell tower was constructed.

**July 5, 2008 - The Community of Bloomer held the dedication for the Bloomer Veterans Memorial.

**May 2023 - Addition of Martin Treptow Memorial and Purple Heart Memorial.

How to Donate

Funding for this memorial came through efforts of various businesses, individuals and organizations. Money was raised through food stands, sale of magnetic ribbons, raffles, motor cycle rides, and donations. The main fundraising push came with the sale of flag poles, benches and pavers. As the memorial lives on, future funds will be generated through the continued sale of engraved pavers.

The 6"x6" engraved pavers cost \$250. The 12"x12" engraved pavers cost \$500. Engraving on the pavers should pay tribute to a veteran or present a patriotic message. Individuals wishing to purchase a paver may do so by contacting the Bloomer Community Visitors Center at 715-568-3339.

Olson Funeral Home & Cremation Center

Pre-Planning and Monument Services

— Funeral Directors —

David Olson, Ben Olson & Dana Zwiefelhofer
Owned and operated by the Olson's for 3 generations



1516 Larson St., Bloomer, WI 54724
715-568-5250

olsonfuneralhome@bloomer.net

olsonfuneralhomebloomer.com





Banking on Relationships,
**INVESTING IN OUR
 COMMUNITY**

- Ag, Business & Personal Loans, Mortgage & Home Equity Loans
- Checking, Savings, CDs, HSAs & IRAs
- Online & Mobile Banking, Mobile Deposit, Bill Pay & Remote Deposit



**DAIRY STATE
 BANK**

Banking on Relationships

**VISIT US ONLINE:
dairystatebank.com**

1311 14TH AVENUE, BLOOMER | 715-568-9480

RICE LAKE | MENOMONIE | BIRCHWOOD | COLFAX | CUMBERLAND
 DOWNSVILLE | HAUGEN | PRAIRIE FARM | TURTLE LAKE | WHEELER

Member FDIC



Government & Regional Services

Post Office

622 Main St.....715-564-4038

Community Ambulance Service

1200 15th Ave.....715-568-5924

Fire Department.....715-568-5555

Police Department

1200 15th Ave.....715-568-5924

Electric Shop.....715-568-4444

Water and Sewer Administration

1503 Main St.....715-568-3424 ext. 20

City Clerk and City Administrator

1503 Main St.....715-568-3032

City Shops

1503 Main St.....715-568-2811

G.E. Bleskacek Family Memorial Library

1519 17th Ave.....715-568-2384

Recycling Center

407 26th Ave.....715-568-1803

Bloomer Broadband

1120 15th Ave.....715-568-4830

WE Energies.....800-242-4035

Senior Civic Center

2121 Duncan Road.....715-568-1888

Bloomer Area Aquatic and Recreational

Center/Pecha Family Memorial Pool

1731 17th Ave.....715-568-3483

Bloomer Historical House

2200 South Main St.715-568-2399

Bloomer/New Auburn Food Pantry

808 Jackson St.715-568-3733

CHIROPRACTIC CARE SERVICES

Flynn Chiropractic, LLC

1518 Main St.....715-568-1600

Kelley Chiropractic

1503 Larson St.....715-568-4220

HEALTH CARE SERVICES

FOR EMERGENCY SERVICES, DIAL 911

Hospital:

Mayo Clinic Health System Chippewa Valley

1501 Thompson St.....715-568-2000

Marshfield Clinic

1706 York St.....715-568-6220

PHARMACY

Ed's Pharmacy

1511 Main St.....715-568-2190

LONG-TERM CARE

Meadowbrook at Bloomer

1840 Priddy St.....715-568-2503

Colfax Senior Living

110 Park Drive, Colfax715-962-3186

Dove Healthcare

2217 Duncan Road.....715-568-9700

DENTAL CARE

Blue Diamond Family Dental

1502 Main St.....715-568-2363

EYE CARE

Herman Advanced Family Eye Care

1402 Main St.....715-568-1373

PHYSICAL THERAPY

Midwest Physical Therapy

1731 17th Ave.....715-568-4669

Dove Healthcare

2217 Duncan Road.....715-568-9700



Schools



SCHOOL DISTRICT OF **BLOOMER** *Challenge Empower Achieve*

The School District of Bloomer serves rural, residential, and farm communities across the Chippewa and Dunn County area. The community has three major public schools. Bloomer High School is centrally located on the south end of Bloomer just off Hwy 40 and 53.

Bloomer Middle and Elementary Schools are located to the north central area of the city off of Hwy 40 near the business district.

The Bloomer Board of Education is proud of the quality curriculum offerings, exceptional staff and strong athletic teams supported by the community. Among other things, the community supports a vibrant summer school program open to all youth of the area. The summer program includes creative, artistic, physical, and remedial opportunities. The district also supports all area youth activities in collaboration with Bloomer City officials.

The School District of Bloomer is committed to excellence by challenging and empowering all students to achieve their potential as life-long learners in an ever-changing global society. The District focuses on the development of character as well as academics in order to prepare youth through service to others for the betterment of society.




thrivent[®]

Brady L Zwiefelhofer
MSFS, AEP[®], CFP[®], Wealth Advisor

Anna Morrison, Licensing Trainee
715-514-1540



Certified Financial Planner Board of Standards, Inc. (CFP Board) owns the CFP[®] certification mark, the CERTIFIED FINANCIAL PLANNER[™] certification mark, and the CFP[®] certification mark (with plaque design) logo in the United States, which it authorizes use of by individuals who successfully complete CFP Board's initial and ongoing certification requirements. 27193 R4-24

In addition to the Bloomer Public Schools, there are several small private schools located in the community. These schools include St. Paul's Catholic, and St. Paul Lutheran, as well as Sunny Meadow Amish School located north of Bloomer.

Learn more today about the Bloomer Public Schools by checking out current events as well as the school district on the web at <http://www.bloomer.k12.wi.us>.





Gratitude 2024-25

Welcome to Bloomer, WI
and the surrounding area

*I am proud to
call this my
hometown!*



*Please contact Mary today
to buy or sell a home in
Chippewa Falls, Bloomer,
Eau Claire & surrounding
communities in
Northwestern Wisconsin.*

*Mary has provided exceptional real estate services to home buyers and sellers since 1997.
Her one-of-a-kind personality & compassion for others, combined with her expertise & knowledge of the
communities, is a large part of what has made her so successful in what she does.*



Mary F. Jarr-Rufledt

Broker/Owner/REALTOR®

Licensed in WI & MN

CRS, GRI, RRS, ABR, SRES

Cell: 715.828.9347

Office: 715.830.1001

Fax: 715.830.1005

4410 Golf Terrace Suite 125 • Eau Claire, WI 54701

"Helping people is what real estate is all about!"

www.EliteRealty-Wisconsin.com • www.maryrufledt.com • info@maryrufledt.com





Recreation

Key to Icons



ATV Trails



Biking



Boat Launch



Camping



Cross Country Skiing



Fishing



Fishing Dock



Golf



Hiking



Horseback Riding



Ice Skating



Kayak Launch



Mt. Biking



Picnic Shelter



Picnic Area



Playground



Sledding



Snowmobile Trail



Snowshoeing

BLOOMER SKATING RINK

There is a skating rink and a hockey rink located on the east edge of the city of Bloomer with a warming house and free skate rental. There is an excellent sledding hill that is located adjacent to the skating and hockey rinks. The city provides supervision for these activities.

715-568-3032 | ci.bloomer.wi.us



BLOOMER SNOWMOBILE ROUTES

The Bloomer has a local snowmobile club, the Bloomer Sno-Hawks, and a snowmobile route that passes through the city. This route allows both local and out of town snowmobilers to pass through the city and gain access to local businesses (ie. gas stations, food).

715-379-9336 | snohawks.wixsite.com/snohawks



BASS LAKE ATV TRAILHEAD

New Auburn

Bass Lakes ATV Trailhead welcomes riders to over 23 miles of ATV trails that wind through the Chippewa County Forest.

715-726-7920 | co.chippewa.wi.us



BLOOMER MEMORIAL GOLF COURSE

Since 1930, the Veteran's Memorial Golf Course in Bloomer Wisconsin has been a staple of the community. Not only does it provide a beautiful 18 holes of golf, but it also has a popular bar in the club house overlooking the course.

715-568-1743 | bloomergolfcourse.com



CHIPPEWA COUNTY ATV TRAIL

Over 19 miles of ATV trail. You will be challenged with steep hills and valleys as the trail winds past small lakes and beaver ponds as well as spectacular vistas and abundant wildlife.

715-726-7920 | co.chippewa.wi.us





NORTH WOODS SPIRITS AND FINE WINES

2000 17th Ave,
Bloomer, WI 54724
Located in the
McDonalds building.



BLOOMER'S LIQUOR STORE



GREATEST SELECTION IN THE AREA!
Veteran and locally owned.
**SHOW MILITARY ID AND
GET 5% DISCOUNT!**

Northwoodsspirits.com • 715-568-5800 • Follow us on Facebook





CHIPPEWA COUNTY FOREST

The 33,000-acre area offers excellent terrain for a variety of recreational trails including over half of the Chippewa County's section of the Ice Age Hiking Trail.

715-726-7920 | co.chippewa.wi.us



CHIPPEWA COUNTY SNOWMOBILE TRAILS

Over 500 miles of funded snowmobile trails throughout the County. Call for current conditions, trail information, and a map. 866-723-0331 | chippewasnowmobiletrails.com



CHIPPEWA MORAINES ICE AGE INTERPRETIVE AREA

New Auburn

A network of trails leads from the Chippewa Moraine David R. Obey Ice Age Interpretive Center into the surrounding forests, lakes, and ridges that make up the Ice Age Scientific Reserve.

715-967-2800 | dnr.wi.gov



HAY MEADOW HORSE TRAIL

A 22-mile equestrian trail system winding through scenic hardwood and poplar forests. Riders will pass many lakes, ponds, and woodland streams on these scenic trails.

715-726-7920 | co.chippewa.wi.us



HICKORY RIDGE RECREATION AREA

Bloomer

Twenty-seven miles of ski trails groomed for traditional and skate skiing. Open to hiking and mountain biking in the summer.

715-726-7920 | skihickoryridge.com



Recreational information courtesy of Go Chippewa County. The Go Chippewa County travel guide can be found online at gochippewacounty.com

Recreation

ICE AGE NATIONAL SCENIC TRAIL

A 23-mile section of Wisconsin's Ice Age Trail passes through county forestland and state protected lands.

Foot travel only.

715-967-2800 | iceagetrail.org



MORRIS-ERICKSON COUNTY PARK

New Auburn

Morris-Erickson County Park offers 28 campsites for tents, trailers, RVs, and campers. They have flush toilets, an on-site dump station, and electric hookups. There is boat launch access to Long Lake.

715-726-7882 | cccamping.us



45+ YEARS IN BUSINESS

General Dentistry

BLUE DIAMOND
FAMILY DENTAL

1502 Main Street
Bloomer, WI 54724



Monday - Friday
8:00 a.m. - 5:00 p.m.



Christopher Goetti, D.D.S.

James A. Jenders, D.D.S.

David J. Irwin, D.D.S.

Michael A. Benyaich, D.D.S.

Cathy Feuling, Business Manager

715-568-2363

bluediamondfamilydental.com





Recreation

NINTH AVE PARK

Bloomer

The Ninth Avenue (North) Park in Bloomer offers family and group picnic areas, up-to-date playground, outdoor exercise area and brand new handicap accessible fishing dock with kayak launch.



ROUND LAKE COUNTY PARK

New Auburn

A local favorite to go swimming, have a family picnic or to catch walleye, musky, and panfish. It has one of the finest natural beaches Chippewa County has to offer.

715-726-7882 | co.chippewa.wi.us



O'NEIL ATV TRAILHEAD

Bloomer

The O'Neil ATV Trailhead welcomes riders to over 23 miles of ATV trails that wind through the Chippewa County Forest.

715-726-7920 | co.chippewa.wi.us



- Bloomer Sports Complexes -



Resorts & Camping



**Birch Point
Resort**
14503 210th Ave.
715-568-1525
birchpointresort.net



**Cornell Lake
Resort**
16918 190th Ave
(715) 288-6015
www.facebook.com/
Cornell-Lake-Resort-and-
Campground
-112813972073141/



Rock Lake Lodge & Campground

23015 153rd St.
715-568-4370
https://
rocklakecampground.com/



Visit us at the
Bloomer Chamber office
at 1731 17th Avenue.

YOUR SOURCE FOR COMMUNITY NEWS FOR OVER 120 YEARS!

BLOOMER ADVANCE

1210 15th Avenue • PO Box 25
Bloomer, WI 54724
(715) 568-3100

Newspaper • Office Supplies • Commercial Printing



*Keeping you informed
is important to us!*

Visit our website:
www.bloomeradvance.com



*Flynn
Chiropractic, LLC*

1518 MAIN STREET, BLOOMER, WI 54724
715.568.1600 or 715.379.6941

bloomerdoc@gmail.com

Bloomer

floral & gift shop

Flowers * Clothing * Jewelry * Home Décor & More



**YOUR LOCAL
ONE STOP SHOP
FOR GREAT
GIFTS!**



1316 Main St.
715-568-5600

bloomer-floral.com
bloomerfloralandboutique.com





Lake Como



Como Lake, also known as the Bloomer Pond, is a 98 acre lake located in the heart of Bloomer in Chippewa County. It has a maximum depth of 11 feet. Visitors have access to the lake from a public boat landing. There are also two handicap accessible fishing docks on the lake, one on Duncan Road/CTH Q and one at the North Park. Fish include Panfish, Largemouth Bass and Northern Pike.



During the summer, in addition to fishing, the lake offers swimming at the city beach. Kayak, canoe and pontoon boat owners also enjoy exploring the lake. In addition to the boat landing off of Vine St., there is a kayak launch on the new fishing dock at the North Park off of Ninth Ave.

Bloomer also boasts a lake association who's purpose is to maintain and enhance the appearance and function of the lake. The Bloomer Lake Association owns and operates a weed harvester to help keep down the weeds in the lake. The harvester cuts off the weeds about three feet below the surface of the lake to make it nicer



for boating and other recreational uses while still maintaining a healthy habitat for the fish.

In the winter, ice fishermen enjoy fishing on the lake and the Northern Wisconsin Ice Race Club holds ice races on the lake each year, weather permitting.





Facts & Figures

Name: Como Lake (Bloomer Mill Pond)
 Waterbody ID (WBIC): 2152100
 Area: 98 ACRES
 Maximum Depth: 11 feet
 Bottom: 80% sand, 10% gravel,
 10% rock, 0% muck
 Waterbody Type: flowage
 Hydrologic Lake Type: DRAINAGE
 County: Chippewa
 Region: WC
 Latitude,
 Longitude: 45.107630, -91.504840

For more information about Lake Como a contour map can be found at <https://dnrx.wisconsin.gov/swims/downloadDocument.do?id=29816669> and an interactive map of the lake can be found at https://dnrm.wisconsin.gov/H5/?viewer=SWDV&run-Workflow=search¶m=LAKE,WATERBODY_WBIC,2152100. Note that the new fishing dock at North Park does not show on the DNR maps as of this writing.

Lake Como



SoftWave
 Tissue Regeneration Technologies

Stem Cell Tissue Regeneration

Weightloss, Dry Needling,
 Digital XRays, Cupping
 Physiotherapies



DOT FED MED
 Physicals

Dr. Jodi Swartz
 Dr. Brian Kelley
 Dr. Noah Zurbuchen

1503 Larson Street
 Bloomer, WI 54724
715-568-4220
www.kelchiro.com



Churches & Organizations

CHURCHES

- Assembly of God**
Hwy 64/40.....716-568-1570
- Bloomer Baptist Church**
2620 Duncan Rd.....715-568-1979
- Christ Lutheran Church**
1421 Main St (office).....715-568-4400
- Christian Life Fellowship**
1514 11th Ave.....715-568-4463
- First Congregational United Church of Christ**
1324 15th Ave.....715-568-2893
- The Fountain Church**
1320 N. Industrial Dr.....715-568-3540
- Good Shepherd Lutheran Church**
1504 Vine St.....715-568-4265
- Our Savior's Lutheran Church (ELCA)**
1800 Jackson St.....715-568-4803
- St. John the Baptist Catholic Church
(Cooks Valley)**
4518 State Hwy 40.....715-568-3779
- St. John's Lutheran Church**
1403 Newman St.....715-568-5446
- St. Paul's Catholic Church**
1222 Main St.....715-568-3255
- St. Paul Evangelical Lutheran Church (WELS)**
1319 Larson St.....715-568-4322
- United Methodist Church**
1700 Main St.....715-568-1971

ORGANIZATIONS

- Bloomer Community Club/Bloomer Fair**
1731 17th Ave.....715-568-3339
- Bloomer Community Visitors Center**
1731 17th Aven.....715-568-3339
- Bloomer FFA**
1310 17th Ave.....715-568-5300
- Bloomer Chamber of Commerce**
1731 17th Ave.....715-568-3339
- Bloomer Industrial Development**
1731 17th Ave.....715-568-3339
- Bloomer Lions Club**
12816 222nd Ave.....715-404-9399
- Bloomer Rod & Gun Club**
PO Box 162.....715-568-4086
- Bloomer Woman's Club**
22717 153rd St.....715-568-3940
- Bloomer Food Pantry**
808 Jackson St.....715-568-3733
- Bloomer SnoHawks Snowmobile Club**
Mark Buchner, President
21907 175th St, Cornell, WI 54732.....715-456-8703
- Knights of Columbus**
1222 Main St.....715-568-3255
- Masonic Lodge**
Larson St.....715-568-5250
- Northern Lights Barbershop Chorus**
2217 Freeway Dr.....715-568-3668
- Red Cedar Sounds**
2217 Freeway Dr.....715-568-3668
- VFW**
2323 8th Ave.....715-568-5943
- Woodmohr 4-H Club**
Sarah Frank.....715-288-6864



Free Estimates

**913 MARTIN ROAD
BLOOMER**

AUTO BODY 715-568-2830

- REPAIR ALL MAKES & MODELS
- WORK WITH ALL INSURANCES
- LOANER CAR AVAILABLE
- SPRAY-IN BED LINERS





We're In This Together.

At AJ Manufacturing we never lose sight of how valuable our employees and the Bloomer community are in making our products and service great. Our employees deserve the credit for our success and growth.
Quality, on-time, every time.



AJ MANUFACTURING, INC.
BUILDING IDEAS

☎ 800-328-9448 @ www.ajdoor.com



Made in the USA





Industry

From our diversified industrial park to our commitment to grow our community, Bloomer means business. The City of Bloomer has a population of 3,495, located within Chippewa County, which has a population of 62,600.

Throughout the year outdoor enthusiasts enjoy all that Lake Como has to offer. Local medical facilities provide outstanding care and service. The local school district is top notch and post-secondary educational institutions are within 30 miles of the City of Bloomer.

Contact the city by phone at 715-568-3032 or visit their website at www.ci.bloomer.wi.us.



A-1 Excavating began operations in 1972. Today the company offers street construction, excavation, road grading, and water and sewer utility services. In addition, A-1 offers hired trucking and heavy hauling services. A-1 Excavating currently has over 200 employees.



A.J. Manufacturing, Inc. is an innovative manufacturer of doors and windows for use in Post Frame Buildings, Commercial Air Handling Units, Air Supported Structures, and Residential home improvement retail centers. Operating from four facilities in Bloomer, A.J. Manufacturing is the leader in product quality, performance, and value in the markets it serves. A reputation for developing unique solutions for its customers, the highly cross trained employees produce finished goods for shipment in North America and Internationally. Mass customization, on-time delivery, and customer focus define the success of A.J. Manufacturing, Inc.



All-Ways Transit, Inc. is a family-owned and operated OTR trucking company incorporated in 1990. We offer reliable coast to coast transit in combination with quality service that will surpass customer expectations. All-Ways Transit believes that your transportation needs are essential to its success and as a result assuring customer satisfaction is job number one. The company's fleet currently consists of 31 tractors; a mix of both Peterbilt and Volvo. Each truck is individually tailored to represent our customers with both style and class. Our loyal truck driving professionals do their best to assure our customer's freight hauling needs are carried out using only the highest level of service possible. They attain this by handling freight with the utmost of care, respect, and by practicing superior safety measures. All-Ways hauls dry van, flatbed, step-deck, and oversize loads.

Bloomer Broadband has been serving the city of Bloomer since 1901. Today residential and business customers receive telephone, Internet, and television services over a state of the art fiber optic network. All customers have access to a full Gigabit (1000 Megabits) of symmetrical internet speed. The company has continued to extend its fiber optic network. In 2019 fiber optics were extended outside the local exchange to rural customers, east and south of Bloomer. Bloomer Telephone Company employs eight people and is located at 1120 15th Avenue.

Barlow Insurance Agency, LLC



1320 15th Avenue
P.O. Box 3
Bloomer, Wisconsin 54724
Phone: 715-568-2351
barlowin@bloomer.net

Our Agents . . .

Samantha Barlow • Patricia Clark





Hometown Proud since 1950



CATALYTIC COMBUSTION

EMISSION TECHNOLOGIES

QUALITY PEOPLE, QUALITY PRODUCTS

Learn more about our company, our products, and opportunities to grow your career here! Visit www.CatalyticCombustion.com





Work Locally. Impact Globally.

Charter Next Generation (CNG) has quickly become North America's leading independent producer of high-performance, specialty films used in flexible packaging and other end-use markets.

Driven by a relentless sustainability-first mindset, our Bloomer, WI facility plays a vital role in the growth and innovation that has characterized the company since its inception.

World-Class Career Benefits

Employee Ownership • Advancement Opportunities
Quarterly Performance Bonuses • Flexible Scheduling

CNGINC.COM/CAREERS



Industry



Bloomer Truck Repair - is a family-owned and operated diesel truck and trailer repair shop. Our team provides diesel repair, diagnostics, truck and trailer maintenance, engine rebuilds, transmission service and much more. The owners and employees of Bloomer Truck Repair have over 70 years of combined experience and a reputation of high-quality work in the diesel field. Bloomer Truck Repair is conveniently located just off Highway 53, Exit 110 at 2024 21st Avenue. Our priority is to provide personalized, affordable, trusted service to get your truck and trailer back out on the road as quickly and safely as possible.



Catalytic Combustion Corporation was founded in 1950 by individuals who recognized the need for air pollution control and catalyst technology. They introduced cutting-edge technology with the development of the first ever U.S. patented catalyst to destroy volatile organic compounds (VOCs). Catalytic Combustion has a diversified base with the following divisions: Catalyst, Engine Catalyst, Power Generation, Exhaust, Air Correction, Finishing Products and Metal Fabrication. Our catalyst products use patented technology to reduce the output of volatile organic compounds (VOCs) that are harmful to the environment and its inhabitants. Catalytic provides products to industries like food service, consumer appliances, non-automotive engines, power generation, gas compression, production painting and printing, pharmaceutical, chemical processing and a wide range of other manufacturing applications. The entire company is supported by a multi-disciplined engineering staff and a 24/7 oxidizer and air pollution control service department.



Charter NEXT Generation (CNG) - Bloomer, WI, Inc. is a leading domestic and international engineered films producer for high performance industrial, medical, automotive, and consumer market segments, to mention a few. The company excels in the design of cast embossed film structures and laminations for the most demanding applications. The Bloomer location was acquired by Charter NEX Films in December 2015, which now has a total of six locations as follows: Superior, Milton, and Rhinelander, WI, Delaware, OH, and Turns Falls, MA. CNG is a North American leader in engineering, extruding, and manufacturing superior-quality monolayer, coextruded and barrier films for flexible packaging applications. The other five locations produce blown film products that are ideal for industries such as consumer goods, food and beverage, food service, industrial, lawn and garden, medical, and pet food.



Glass Insulators, Inc. is a leader in the manufacturing of insulating glass units for both residential and commercial window and door manufacturers. Our units are Energy Star qualified through IGCC certification and we focus on providing our customers with quality products and industry leaving service and lead times.

Check out our website at
www.bloomerchamer.com

Follow us facebook



Industry



GVS Filtration provides a unique competitive advantage to our customers around the world. Our team of dedicated employees and top quality suppliers are able to serve our customers more effectively and efficiently in their unique markets. With a global footprint and a global customer base, GVS Filtration offers dependability and reliability beyond OE specifications and customer requirements.

Our product line includes a full range of filters and components for a wide variety of markets and applications including air filtration and liquid filtration.

GVS Filtration is proud to say Bloomer is a place to call home!

SB&B, continued

integrity to high-tech processing of diversified food lines, we are determined to deliver uncompromised product quality for the food market. Our knowledgeable and experienced staff understands the processing chain that commodities endure, from growers to logistics to delivery. That's why you know the food you get from the SB&B has to be the world's best.



PMI, LLC is a fully integrated steel fabrication facility that pulls cost from the steel fabrication supply chain by utilizing mill direct pricing on material acquisition, eliminating the added cost of steel service center operations, producing parts through state of the art automation and delivering high quality value-added parts to our customers on time.

Located in Bloomer, WI, PMI stamps metal parts and is a metal service center. PMI offers steel blanking, slitting, metal stamping, laser cutting, turret/punch fabrication, robotic welding and part assembly. Among those products we specialize in are metal parts for the appliance industry, home improvement industry, along with components for freezers, fire extinguisher enclosures, air compressors, generators, office furniture, and steel entry doors.



SB&B supplies the world with a variety of food commodities that are clean and safe, with genetic integrity and organic certification. Food safety is our primary focus. From preservation of food



BLOOMER TRUCK REPAIR, LLC
 Henry & Tammy LeBakken
 Owners

TRUCK & TRAILER REPAIR
 2024 21st Avenue Bloomer, WI 54724 / Hwy. 53/Exit 110

Office: 715-568-5650 Fax: 715-568-5648	www.bloomertruckrepair.com btrepair@bloomer.net	Monday- Friday 7AM-5PM Road Service Available
-------------------------------------------	----------------------------------------------------------------------------------------------------------------------------------------------	--------------------------------------------------





100% EMPLOYEE OWNED
PMI
PROCESSED METALS. INNOVATORS

100% employee owned BUILD A CAREER. WITH PMI

PMI, LLC is a fully integrated steel fabrication facility. We focus on minimizing costs while maintaining production of high-quality parts.

We're always looking to add talented, hardworking people to join the PMI family. View our current openings at:

PMILLC.COM/JOIN-OUR-TEAM/

Manufacturing Excellence, Nothing Less



- Bloomer's Ironhorse Industrial Park -

Bloomer's Ironhorse offers 40+ acres available for development with freight rail access, telecommunications infrastructure and easy access to state highways providing a wide range of development opportunities.



The Ironhorse Industrial Park Offers:

- Shovel ready sites
- Close proximity to Highways 53, 64, and I-94
- Abundant regional workforce with access to nearby higher education institutions
- Significant water supply and waste water treatment capabilities
- Incentive packages custom tailored for quality prospects
- Business friendly community

Site Specifications

Location:	Highway 64 Bloomer, Wisconsin
Available Acres:	48 Acres
Zoning:	Industrial
Electrical:	Municipal
Gas:	WE Engeries
Water:	Municipal
Sanitary Sewer:	Municipal

Utilities

Bloomer offers some of the lowest electrical costs in the State!

Telecommunications:
Bloomer Broadband
100% Fiber Optic Broadband Network



Photo, graphic and information courtesy of Chippewa County Economic Development Corporation

Ironhorse Industrial Park Tenants

1 AVAILABLE 7.69 Acres	7 SB&B NAICS 445230
2 AVAILABLE 19.71 Acres	8 Holzem Machine NAICS 332710
3 AVAILABLE 3.85 Acres	9 AJ Manufacturing Inc. 10 NAICS 332321
4 AVAILABLE 4.56 Acres	11
5 AVAILABLE 4.67 Acres	12 Charter NEX Films NAICS 326113
6 AVAILABLE 9.95 Acres	13 Harms Concrete NAICS 2311001

Contact Bloomer IDC

1731 17th Avenue, Bloomer Wisconsin • 715-568-3339



Accountants

Adler CPAs & Advisors

1706 York St Suite 8
715-568-5189
www.adlercpas.com

Anderson Accounting

1706 York St Suite 1
715-568-4423
www.anderson-accounting.com

Adult Care

4 Seasons AFH

1404 Thompson St.
715-568-2219
facebook.com/4SeasonsAFH

Ag Services

SB&B

2135 North Industrial Dr
715-568-1480

River Country Co-op

16779 98th Street
715-568-2933

Asphalt Products

Blackstone Asphalt of Wisconsin

3236 3rd St • Eau Claire, WI 54703
715-933-1183
www.blackstoneasphaltwi.com

Assisted Living/Nursing Homes

Meadowbrook of Bloomer

1840 Priddy St
715-568-2503
www.meadowbrookbloomer.com

Colfax Senior Living

110 Park Dr. • Colfax, WI 54730
715-962-3186
www.frontidacare.com

Dove Healthcare

2217 Duncan Rd
715-568-9700
www.dovehealthcare-bloomer.com

Auto Sales/Parts/Service

Bloomer Auto Supply/NAPA

919 Main St
715-568-2511

Bloomer Tire Center

1407 Oak St
715-568-4862

Bloomer Truck Repair & Warehousing

2024 21st Ave.
715-568-5650
www.bloomertruckrepair.com

Carquest of Bloomer

1710 Oak St
715-568-1330

Clearview Auto Glass

620 Main St
715-568-5723
www.clearviewbloomer.com

Days Tire Auto/Days Power Sports

1012 Martin Rd
715-568-5381
www.daystire.com

Pederson Automotive LLC

1730 Martin Road
715-568-2500

River Country Coop

1115 Martin Road
715-568-2170

Southworth Chevrolet

2111 W 20th Ave
715-568-2180
www.SouthworthChev.com

Toycen Auto Body

913 Martin Rd
715-568-2830

Bakeries/Specialty Treats

Bohemian Ovens

905 Martin Rd
715-568-3676

Chrissy's Bloomer Bakery

1415 Main St
715-568-3321

Custer's Cones & Candy

1416 Main St
715-568-3080

Main Street Cafe

1418 Main St
715-568-2233
www.mainstreetcafe.com

Banks

Associated Bank

1203 17th Ave
715-568-3751
www.AssociatedBank.com

BMO Commercial Bank

411 N. Bridge Street • Chippewa Falls, WI 54729
715-723-5531
www.bmo.com

Dairy State Bank

1311 14th Ave
(715) 568-9480
www.dairystatebank.com

Northwestern Bank

202 N. Bridge St • Chippewa Falls
715-723-4461
www.northwesternbank.com

Security Bank

1923 17th Avenue • PO Box 286
715-568-3400
www.securityonlinebank.com

Security Financial Bank

1401 Main St
715-568-1100
www.sfbank.com



sfb

BANKERS

Who Believe in

COMMUNITY

For over 90 years, Security Financial Bank has been serving the needs of local businesses, farms, and families across the Chippewa Valley.

Bankers Who Believe in You

sfbank.com | 888.254.0615 |  Member FDIC | SECURITY FINANCIAL BANK





Banquet/Party Facility

Bloomer Senior Civic Center

2121 Duncan Rd
715-568-1888

Bloomer Moose

1890 9th Ave
715-568-1300

Pines Ballroom

9832 Cty Hwy SS
715-568-2432

White Pine Pavilion

9832 County Hwy SS
715-568-1800 • 715-404-9399

Beauty Services/Salons

Faboo

1513 Main St
715-289-2381
faboo.glossgenius.com

Forever Flawless

1513 Main St
715-651-0425

Hair Off Main

1219 14th Ave
715-568-2523

Krystal Kuts

1706 York St
715-568-1400

Shear Style

1027 Martin Rd
715-568-4247

Beverage Distributors

Park Ridge Distributing, Inc.

1245 Continental Dr • Eau Claire, WI 54701
715-835-9011

Building Supply

Bloomer Hardware

1406 Main St
715-568-4821
bloomerhardware.doitbest.com

Shadick's Sporting Goods & Hardware

1502 16th Ave
715-568-4475

Bus Company/Tours

Kobussen Buses

2118 21st Ave
715-568-4233
www.kobussen.com

Carwash

BC Auto Wash

2059 19th Ave
715-568-2345

Chiropractic Services

Flynn Chiropractic

1518 Main St
715-568-1600

Kelley Chiropractic

1503 Larson St
715-568-4220

Churches

Bloomer Baptist Church

2620 Duncan Rd
715-568-1979

First Congregational United Church of Christ

1324 15th Ave
715-568-2893
www.uccwebsites.net/firstcongbloomerwi.html

The Fountain Church

1320 N Industrial Dr
715-579-6675

City Hall

Bloomer City Hall

1503 Main St
715-568-3032

Cleaning Service

Fresh 'N' Kleen

1107 15th Ave
715-944-8883

Clothing Shop

Bloomer Floral & Gift Shop

1316 Main St
715-568-5600
www.bloomerfloralandboutique.com

Bloomer Community Clothes Closet

1510 Main St
715-827-0894
beardsleybears64@gmail.com

Bloomer Screen Printing

810 17th Ave
715-568-2461
www.facebook.com/bloomer-screen-printing-embroidery

Clubs & Organizations

Bloomer Area Veterans Inc.

17922 205th Avenue • Cornell, WI 54732
715-288-6291

Bloomer Community Clothes Closet

1510 Main Street
715-827-0894
beardsleybears64@gmail.com

Bloomer Community Club

PO Box 273
715-568-3339

Bloomer/New Auburn Food Pantry

808 Jackson Street
715-568-3733

Bloomer Moose

1890 9th Ave
715-568-1300

Bloomer Rod & Gun Club

PO Box 162
715-568-2203
www.bloomerrodandgun.org

Bloomer SnoHawks

1608 Queen St
715-568-2570

Bloomer Woman's Club

Shari Berg, President
22717 153rd St
715-568-3940





Community Foundation of Chippewa County

404 1/2 N. Bridge Street • Chippewa Falls, WI 54729
715-723-8125
www.yourlegacyforever.org

Quarter Queens

1429 Riggs St.
715-379-0122

Coffee Shop

Towne House Coffee & Market

1319 Main St
715-568-5282

Colleges/Universities

Chippewa Valley Technical College

620 W. Clairemont Ave • Eau Claire, WI 54701
715-833-6200
www.cvtc.edu

Concrete

Haas and Sons, Inc.

203 East Birch • Thorp, WI 54771
715-669-5469
www.haas4.com

Harms Concrete, Inc.

20253 75th Street
715-568-1977

Tri City Concrete Contractors

2618 Main St • PO Box 73
715-568-2354

Contractors

Affordable Exteriors

19572 Cty Hwy F
715-933-2150

Haas and Sons, Inc.

203 East Birch • Thorp, WI 54771
715-669-5469
www.haas4.com

The Fireplace Store

2055 19th Ave
715-568-2016

Tri City Concrete Contractors

2618 Main St • PO Box 73
715-568-2354

Crafts/Gift Shop/Specialty Items

A Secret Garden

1416 Main St
715-568-1037
www.asecretgardenbloomer.com/

Avon/Marjorie Kritchman

6620 State Highway 40
715-568-3807
avon.com/repstore/mrkritchman

Bloomer Floral & Gift Shop

1316 Main St
715-568-5600
www.bloomerfloralandboutique.com

Ed's Health Mart Pharmacy

1511 Main St
715-568-2190

Farm House & Gifts

1205 15th Ave
715-568-1240

Seasoned with Love-Pampered Chef

Vanessa LaMeer
715-650-2569

Twice Blessed Resale

1404 Main St
715-579-6675
thefountainbloomer.com

Towne House Coffee & Market

1319 Main St
715-568-5420

Daycare

Rainbow Kidz

1414 9th Ave
715-568-1300

Dentists

Blue Diamond Family Dental

1502 Main St
715-568-2363

Dumpster Service

Rightaway Rolloff LLC

P.O. Box 247
800-596-1834
www.rightawayrolloff.com

Economic Development

Bloomer Chamber of Commerce

1731 17th Ave
715-568-3339

Bloomer Industrial Development

1731 17th Ave
715-568-3339

Chippewa County Economic Development

Corporation

770 Technology Way • Chippewa Falls, WI 54729
715-723-7150
www.chippewa-wi.com

Embroidery

A to Z Embroidery and Screen Printing

4680 Cty Hwy P • Chippewa Falls, WI 54729
715-726-0978

Bloomer Screen Printing

810 17th Ave
715-568-2461

Excavation/Concrete Services

A-1 Excavating, Inc.

PO Box 90
715-568-4141
www.a1excavating.com

Dave Michels Grading & Trucking

5265 185th Ave
715-568-3558

Haas and Sons, Inc.

203 East Birch • Thorp, WI 54771
715-669-5469
www.haas4.com

Harms Concrete, Inc.

20253 75th St
715-568-1977 / harmsconcreteinc@yahoo.com

JH Excavating

7188 190th Ave
715-933-0742





Bloomer Welcomes You!

We are committed to connecting businesses with residents and visitors and improving the quality of life in our community!



715-568-3339 | 1731 17th Avenue | bloomerchamber.com |

A Place to Call Home!

RiverCountry CO-OP

- ▶ HOT STUFF DELI
- ▶ AUTO VALUE PARTS
- ▶ FUEL & DIESEL
- ▶ BEVERAGES, SNACKS & MORE!



1300 MAIN ST.
715-568-2343



1115 MARTIN RD.
715-568-2170



- GRAIN & FEED ◀
- AGRONOMY ◀
- FERTILIZER ◀
- TRUCKING ◀
- STORAGE ◀

AGRI-TECH SERVICES
16779 98TH STREET
715-568-2934





Michels Materials, LLC

18738 State Hwy 124
715-568-3558

Eye Care

Herman Advanced Family Eyecare

1402 Main St
715-568-1373
www.hermaneyecare.com

Fabric/Crafts/Quilting

Heart Blossom Design

N13430 County Road I • Sand Creek
715-658-1333
heartblossomdesign.com

Farm Equipment

Tractor Central

12433 Hwy S • Chippewa Falls, WI 54729
715-669-5469
715-723-8400
tractorcentral.com

Feed

Mitchell Feeds LLC

PO Box 7
715-568-5370

Financial Services

Community Foundation of Chippewa Cnty.

404 1/2 N. Bridge St • Chippewa Falls, WI 54729
715-723-8125
www.yourlegacyforever.org

Edward Jones/Darian Prince

1417 Main St
715-828-0031

Edward Jones/Brian Simmons

2055 19th Ave, Suite 1
715-568-4301

Thrivent Financial-Brady Zwiefelhofer

705 Bay St • Chippewa Falls, WI 54729
715-514-1540

Fire Extinguishers

JH Fire Pro

7188 190th Ave
715-933-0742

Fitness Center

Bloomer Aquatic Center

1731 17th Ave
715-568-3339

Midwest Physical Therapy & Fitness Center, Inc.

1731 17th Ave
715-568-4669

Flooring & Interiors

Bloomer Flooring

920 11th Ave
715-568-2555
www.bloomerflooring.com

Floral & Gift

A Secret Garden

1416 Main St
715-568-1037
www.asecretgardenbloomer.com/

Bloomer Floral

1316 Main St
715-568-5600
www.bloomer-floral.com

Funeral Homes

Olson Funeral Home and Cremation

1516 Larson St
715-568-5250
www.olsonfuneralhomebloomer.com

Thompson Funeral Chapel & Chippewa Valley

Cremation Services

1806 17th Ave
715-568-2310
www.thompsonfuneralhome.com

Gas Station/Convenience Stores

Express Lane BP

1216 17th Ave
715-404-0390

Kwik Trip

1625 Woodard Rd
715-568-1550

River Country Co-op

Two Locations: 1115 Martin Rd and 1300 Main St
715-568-2170

Shadick's Convenience Store

Corner of Hwys 64 & 40
715-568-1461

Golf Course

Bloomer Golf Course

118 13th Ave
715-568-1743

Grocers

Shadick's Price Rite Foods

1303 Main St
715-568-4430

Hardware Stores

Bloomer Hardware

1406 Main St
715-568-4821
bloomerhardware.doitbest.com

Shadick's Sporting Goods & Hardware

1502 16th Ave
715-568-4475

Health & Wellness

Apeiron North Fields Hemp Wellness Cntr

1517 15th Ave
715-532-4367
apeironnorthfields.com

Crush Nutrition/Jennifer Glass

1406 Main St
715-933-8693
crushnutritionbloomer.com

Seibel Wellness

1400 Main St
715-579-2923
www.seibelwellness.com





Healthcare

Meadowbrook at Bloomer

1840 Priddy St
715-568-2503
www.meadowbrookbloomer.com

Colfax Senior Living

110 Park Dr • Colfax, WI 54730
715-962-3186
frontidacare.com

Dove Healthcare

2217 Duncan Rd
715-568-9700
dovehealthcare.com

Marshfield Clinic

1711 York St
715-568-6220
www.Marshfieldclinic.org

Mayo Clinic Health System - Chip. Valley

1501 Thompson St
715-568-2000
www.mayoclinichealthsystem.org

Midwest Physical Therapy, Inc.

1731 17th Ave
715-568-4669

Heating & Cooling

Freedom Mechanical Services

12411 135th Ave
715-226-8941
freedommechanical.services

Gene's Heating & Cooling

9980 County Hwy 55
715-568-2455
www.genesheatandac.com

MGB Preventative Maintenance, LLC

21907 175th St • Cornell, WI 54732
715-456-8703

Homebound Transportation

Curtie Cares, Inc.

1118 18th Ave
715-568-2211
curtiecares.org

Industry

AJ Manufacturing

1217 Oak St
715-568-2204
www.ajdoor.com

Catalytic Combustion Corporation

311 Riggs St
715-568-2882
www.catalyticcombustion.com

Charter NEXT Generation

1710 N Industrial Dr
715-568-5775

GVS Filtration

2200 20th Ave
715-568-5944

Glass Insulators

507 Main St
715-568-3549

Golden Calf Company

601 Main St
715-318-0897

PMI LLC

600 21st St
715-568-1700
www.PMILLC.com

SB&B

2135 N. Industrial Dr
715-568-1480

Insurance

APEX Insurance Group - Stiehl Agency

2055 19th Ave, Suite 100
715-568-5050
www.aigwi.com

Barlow Insurance

1320 15th Ave
715-568-2351

Indianhead Insurance Agency, Inc.

1009 Martin Rd
715-568-2421
www.indianhead-insurance.com

Ruff Insurance Agency

10732 State Hwy 64
715-568-4354

State Farm Insurance - Tim Reedy

1123 15th Ave
715-568-4332

Laundry

Suds 'N Duds Laundromat

925 15th Ave
715-568-3905

Lawn Care/Outdoor Maintenance

LK Habitat Solutions

27490 152nd St • New Auburn, WI 54757
715-933-0421/715-933-2023

Library

GE Bleskacek Family Memorial Library

1519 17th Ave
715-568-2384

Liquor Store

Northwoods Spirits

2000 17th Ave
715-568-5800

Meat Market/Processing

Bob's Processing

2430 S Main St
715-568-2887

Shadick's Price Rite Foods

1303 Main St
715-568-4430

Motels

Bloomer Inn & Suites

1616 Woodard Rd
715-568-3234
www.bloomerinn.com



Pet Care

Doggie Doodles

17152 115th Ave
715-523-3281

Plumbing

Geissler Plumbing

1702 Martin Rd
715-568-1213

Pharmacy

Ed's Health Mart Pharmacy

1511 Main St
715-568-2190

Physical Therapy

Midwest Physical Therapy, Inc.

1731 17th Ave
715-568-4669

Publishing/Printing Services

Bloomer Advance Inc.

1210 15th Ave
715-568-3100

Real Estate

Elite Realty Group

4410 Golf Terrace, Suite 125 • Eau Claire, WI 54701
715-830-1001

Larson Realty

8278 300th Ave • New Auburn
715-967-2494
eric.larsonrealty@gmail.com

Property Executives Realty

2519 North Hillcrest • Eau Claire
715-933-1845
realtor.breannehanson@gmail.com

Team Jenneman/Remax Affiliates

1401 Main Street
715-933-0353

Recreational Vehicle Sales/Service

Willies RV

8234 State Hwy 64
715-568-4947

Rentals

New to You Rentals & Properties

PO Box 416 • Eau Claire, WI 54701
715-864-2414

Resorts & Campgrounds

Birch Point Resort

14503 210th Ave
715-568-1525

Cornell Lake Resort and Campgrounds

16918 190th Ave
(715) 271-3610
<https://www.facebook.com/Cornell-Lake-Resort-and-Campground-112813972073141>

Rock Lake Lodge and Resort

23015 153rd St
715-568-4370
<https://rocklakecampground.com>

Restaurants & Bars

Bloomer Dairy Queen

1317 17th Ave
715-568-1320

Bloomer House

1019 15th Ave
715-864-5195

Bloomer Moose

1890 9th Ave
715-568-1300

Birch Point Resort

14503 210th Ave
715-568-1525

Bohemian Ovens

905 Martin Rd
715-568-3676

Cavern 74

1526 Martin Rd
715-568-7038

Cornell Lake Resort and Campgrounds

16918 190th Ave
(715) 271-3610
<https://www.facebook.com/Cornell-Lake-Resort-and-Campground-112813972073141>

Crush Nutrition/Jennifer Glass

1406 Main St
715-933-8693

Farm House & Gifts

1205 15th Ave
715-568-1240

Happy Hour Bar and Grill

1318 Main St
715-568-1622
happyhourbar2023@gmail.com

Hardee's of Bloomer

2070 19th Ave
715-568-2450

Harms Way Bar & Grill

1103 15th Ave
715-568-3999

Main Street Cafe

1418 Main St
715-568-2233
www.mainstreetcafe.com

McDonalds

2055 19th Ave
715-568-1777
www.mccourtesy.com

Pines Ballroom

9832 Cty Hwy SS
715-568-2432

Rock Lake Lodge and Resort

23015 153rd St
715-568-4370
<https://rocklakecampground.com>

Tasty Trolley Food Truck

1830 17th Avenue
715-829-9732

Towne House Spirits & Eatery

1319 Main St
715-568-5420





Valley Tavern/Stacy Pecha

14515 WI-40
(715) 568-3060
www.facebook.com/people/Valley-Tavern/100063478959621/

White Pine Pavilion

9832 County Hwy 55
715-568-1800 • 715-404-9399

Schools

School District of Bloomer

1310 17th Ave
715-568-2800
www.bloomer.k12.wi.us

Screen Printing

A to Z Embroidery and Screen Printing

4680 Cty Hwy P • Chippewa Falls, WI 54729
715-726-0978

Bloomer Screen Printing

810 17th Ave
715-568-2746

Septic

Bischel's Septic Service

12979 Cty Hwy 55
715-288-6601

Bloomer Septic Service

22015 75th St
715-237-3160

Signs

Brush Works Sign LLC

1310 N. Industrial Dr
715-568-2892

Gaber Signs LLC

33 E. Willow St • Chippewa Falls, WI

Sporting Goods

Bloomer Hardware

1406 Main St
715-568-4821
bloomerhardware.doitbest.com

Shadick's Sporting Goods & Hardware

1502 16th Ave
715-568-4475

Telephone/Internet/Cable

Bloomer Broadband

1120 15th Ave
715-568-4830
www.bloomer.net

Title Service

Chippewa Valley Land Title/Lighthouse Title, Inc.

1705 Kranzfelder St
715-568-3045

Transportation/Trucking

All-Ways Transit

PO Box 194
715-568-4652

Travel

Intentional Journeys, LLC

3467 State Hwy 40 • Colfax, WI 54730
715-456-2022

Truck Repair

Bloomer Truck Repair

2024 21st Ave
715-568-5650

Tuxedos

A Secret Garden

1416 Main St
715-568-1037
www.asecretgardenbloomer.com

Welding

Spence's Specialties

8255 190th Ave
608-322-6793

Check out our website at
www.bloomerchamer.com

Let Us Help Your Business Grow Become a Bloomer Chamber Member.

Here's what we have to offer:

- Helps you make business contacts.
- Increases your visibility by highlighting your company in our newsletter, website and social media.
- Community involvement by supporting our local events.
- Increase your credibility.

Contact us for more details

715-568-3339

1731 17th Avenue

bloomerchamber.com



City of Bloomer



www.bloomerchamber.com